

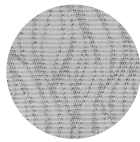
# Panel Systems + Room Dividers

## Solero Panels

The Solero line offers numerous sizes and configurations including freestanding and wall-mounted panels. These panels can be used to simply divide a room or to create a full cubicle. Whatever the demands of your space Solero helps you create more physical distancing, privacy, and helps reduce noise.



### Color



Designer  
Charcoal  
Fabric



Glazed

### Options

36" W STORAGE BIN



36" W SHELF WITH BRACKETS



ELECTRICAL AND DATA CAPABILITIES



### Features + Materials

- Stocked in designer charcoal, fabric panels, with black extruded aluminum frame and raceways – providing outstanding strength and durability. Can be configured in a wide variety of shapes and sizes.
- Provides privacy and noise reduction
- Installation and reconfigurations are quick and easy with the SpaceMax™ EZLOCK connection system
- Cantilevered frame allows for easy installation of optional open shelves and hanging work surfaces
- Capable of CSA approved integrated electrical and data, panels can work in conjunction with UL listed, 8-wire, 4-circuit hard wire electrical
- Pac poles are available to feed electrical wiring down from the ceiling
- 66" high panel is comes in either full fabric, or partially glazed options
- Free-standing room dividers, with feet, are also available



### Dimensions

- Available in **42", 54" and 66" heights**
- 2.75" thick extruded aluminum frame
- Panels are 2.50" thick

